

12 Day Luxury Kimberley Coast Expedition

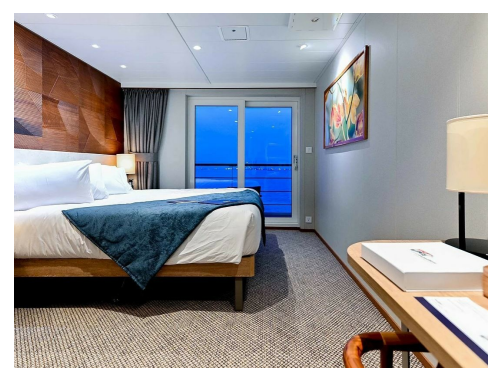
Broome - Horizontal Falls - Montgomery Reef - Darwin - King George Falls

From **\$15,590** pp twin share



- All inclusive Luxury cruising on the Coral Adventurer
- Visit Broome, Horizontal Falls, Montgomery Reef + much more
- Marvel at the 30,000+ Hump Back Whale Migration
- September 2021 departure available
- Book now with only 50% deposit

Description



Join this exclusive charter of the Coral Adventurer to explore the remote Kimberley region in Western Australia and experience some of the most expansive and magnificent landscapes on earth. Turn your eyes upwards to the jagged, deep red ochre cliffs. Ride the remarkable tidal flows. Discover wildlife belonging to another time. Feel the power of the Kimberley's cascading waterfalls and surround yourself with the silence of secluded gorges.

Your Kimberley cruise aboard the Coral Adventurer with Constellation Journeys is all inclusive. There are no expectations to tip, drinks are included with lunch and dinner and shore excursions are a highlight of each day. This Kimberley adventure offers a powerful way to reset your soul and satisfy your urge to explore without leaving Australia.

Itinerary

Day 1

Arrive Broome

Arrive in Broome and transfer to the iconic Cable Beach Club Resort. Tonight, enjoy a welcome dinner with your Constellation Journeys team and fellow travellers. Speak to us if you'd like to arrive earlier and spend some additional time in Broome.

Accommodation: Cable Beach Resort

Meals: Dinner

Day 2

Board Coral Adventurer

Take a complimentary morning tour to the Willie Creek Pearl Farm before joining the Coral Adventurer. Come together in the bar for the Captain's Welcome cocktail party for drinks before feasting on freshly prepared cuisine over dinner.

Accommodation: Coral Adventurer - Explorer Balcony Stateman's Room

Meals: Breakfast, Lunch & Dinner

Day 3

Lacepede Islands

At this time of year the waters surrounding The Lacepede island group often feature large pods of whales migrating south in preparation for warmer southern months. Keep your eyes out for these magnificent mammals as you cruise through this Class A nature reserve.

Accommodation: Coral Adventurer - Explorer Balcony Stateman's Room

Meals: Breakfast, Lunch & Dinner

Day 4

Horizontal Falls & Buccaneer Archipelago

The Horizontal Falls are created as the ocean thunders through a narrow gorge in the McLarty Ranges. As the tide changes water is forcibly pushed through the bottleneck, creating a rushing horizontal waterfall of swiftly flowing seawater. In the spectacular Buccaneer Archipelago you'll see evidence of massive geological forces in the ancient rock formations before concluding this remarkable day with sunset drinks at Nares Point.

Accommodation: Coral Adventurer - Explorer Balcony Stateman's Room

Meals: Breakfast, Lunch & Dinner

Day 5

Raft Point & Ruby Falls

Raft Point guards the entrance to sheltered Doubtful Bay, which harbours significant sites such as the ancient Wandjina rock art galleries. Find wonder and history in the ancient stories contained within the rock art. Later, a visit to Red Cone Creek offers the active an opportunity to climb up to a freshwater swimming hole overlooking Ruby Falls.

Other sites we may visit in Doubtful Bay include the mighty Sale River and Steep Island.

Accommodation: Coral Adventurer - Explorer Balcony Stateman's Room

Meals: Breakfast, Lunch & Dinner

Day 6

Montgomery Reef

Get ready for a thrilling experience at Montgomery Reef as the sea rapidly recedes in a mammoth tide. The reef rises from the ocean in a cascade of rushing water, revealing the flat topped reef and leaving you breathless with wonder and excitement. Opportunistic birds take advantage of the marine life left exposed in rock pools, while turtles and larger marine life may also be spotted.

Accommodation: Coral Adventurer - Explorer Balcony Stateman's Room

Meals: Breakfast, Lunch & Dinner

Day 7

Prince Regent River & Kings Cascade

Running on a fault line the spectacular Prince Regent River is accessible only by sea. The area is a haven for native mammals and birds and is our access point for the magnificent King Cascade, a terraced waterfall. Falling from a considerable height and spanning a wide distance, the water tumbles down a staggered terrace of Kimberley sandstone, surrounded by grasses, mosses and ferns. It is an iconic Kimberley sight.

Accommodation: Coral Adventurer - Explorer Balcony Stateman's Room

Meals: Breakfast, Lunch & Dinner

Day 8

Bigge Island & Careening Bay

Picture a harbour, dotted with islands lined with mangroves and monsoon rainforests, set against a backdrop of ochre hued escarpments. This is a truly spectacular location. White-bellied sea eagles and other birds of prey are often seen here and, at low tide, expansive mudflats reveal large populations of mud-skipper, mangrove crabs and even a crocodile or two.

Accommodation: Coral Adventurer - Explorer Balcony Stateman's Room

Meals: Breakfast, Lunch & Dinner

Day 9

Hathways's Hideaway & Mitchell Falls

Carved through layers of sandstone Mitchell Falls descends over four tiers, creating pools of emerald green on each level. Stand and savour the serenity of this ancient landscape. Visiting Mitchell Falls is only possible by taking the optional helicopter flight (at additional cost). Alternatively, explore the sandstone caves of Hathway's Hideaway, a maze of weathered tunnels, arches and columns that was once an Aboriginal midden.

Accommodation: Coral Adventurer - Explorer Balcony Stateman's Room

Meals: Breakfast, Lunch & Dinner

Day 10

Vansittart Bay & Jar Island

Vansittart Bay is home to many cultural and historically significant sites like the remarkable Jar Island Gwion Gwion (Bradshaw) rock art galleries, estimated to be around 15,000 years old. Nearby, on the Anjo Peninsula, we explore the well preserved wreckage of a US Air Force C-53 Skytrooper aircraft.

Accommodation: Coral Adventurer - Explorer Balcony Stateman's Room

Meals: Breakfast, Lunch & Dinner

Day 11

King George River & Falls

Aboard a Zodiac you'll cruise over the emerald coloured waters towards the site of King George Falls. Cast your eyes up to the vertically sided sandstone canyons cutting into the plateau where the King George River ends. The ochre red cliffs are an iconic site of the Kimberley.

Accommodation: Coral Adventurer - Explorer Balcony Stateman's Room

Meals: Breakfast, Lunch & Dinner

Day 12

Arrive Darwin

Enjoy breakfast on board before bidding farewell to the extraordinary crew who have become almost like family. Constellation Journeys will provide your transfer to your Darwin hotel (or the airport) or talk to us about staying longer in the Top End.

Accommodation: Coral Adventurer - Explorer Balcony Stateman's Room

Meals: Breakfast

Inclusions & Exclusions

Inclusions

- 1 night Cable Beach Resort
- 10 nights on board the Coral Adventurer in a Explorer Balcony Stateman Room
- Curated shore excursions and sightseeing
- Daily lectures and briefings provided by regional experts
- All meals and a selection of wines, beers, juices and soft drinks
- All entrance fees to National Parks and Ports
- Tips and gratuities
- Transfers from ship to hotel or airport

Your Vessel

The Coral Adventurer, built in 2019 by the Australian owned and operated Coral Expeditions, is an advanced tropical expedition ship designed to access hard to reach destinations in safety and style. With a maximum of 110 guests on board she provides an intimate and sophisticated expedition experience, taking you closer to nature in absolute comfort.

Need help booking your flights to Kununurra?

We can organise them for you. Call us on 1300 893 404 or send us an inquiry at info@traveldream.com.au

Exclusions

- Airfares
- Darwin Accommodation
- Items of a personal nature, e.g. phone, gifts, souvenirs etc.

Single Supplement

Please contact us for a custom quote if you are interested in travelling solo.

Child Policy

Children must be accompanied by a responsible adult 18 years old and over to travel. No discounts available for children. No unaccompanied minors are allowed.

Covid-19 Policy/ Health & Safety Overview

Our plan focuses on prevention, to target a 100% COVID free environment when we set sail. We will implement a three-tiered medical screening protocol which includes testing for COVID-19, and will



ensure that everyone on board will have passed through this screening process. This prevention protocol will be supported by strict onboard mitigation actions and an approved response plan. This plan will be supported by new Standard Operation Procedures, developed for each vessel with cruise specific requirements. We have maintained a high standard of safety and guest comfort for over 35 years - a record we are proud of. Vessel has a doctor onboard at all times.